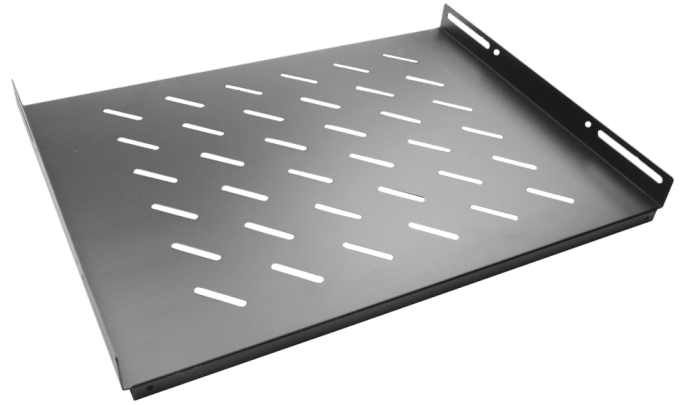


WPR45FS

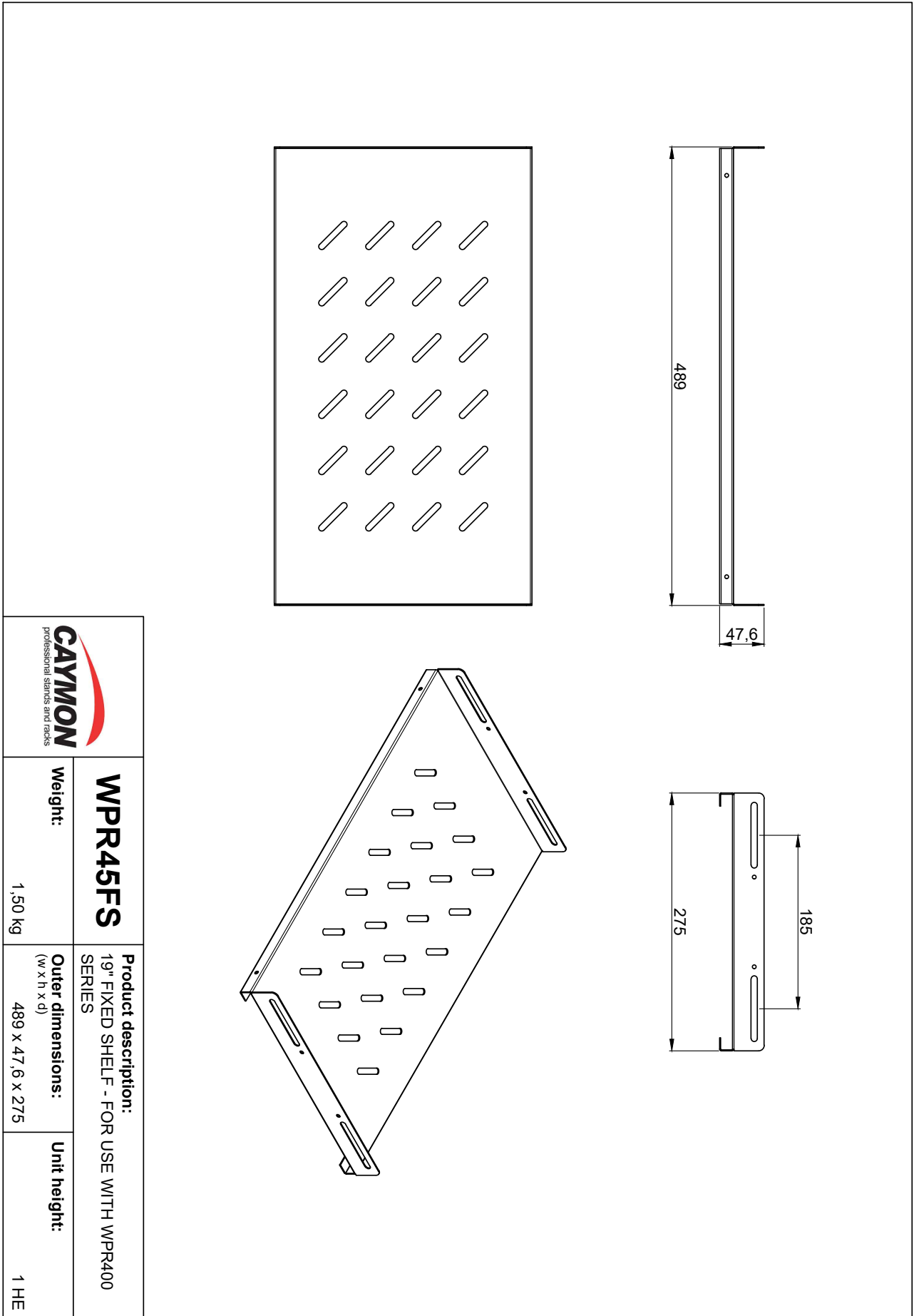
19" fixed shelf - 275mm depth

A 19" Fixed shelf made of steel with a thickness of 1,2 mm with a black structural powder coating. The shelf can be used to store equipment which doesn't contain a standard 19" mounting fixture. For use with WPR & HPR racks only.



Product Features:

Dimensions	490 x 15 x 275 mm (W x H x D)
Weight	1.800 kg
Max. load	50 kg



WPR45FS

Weight:

1,50 kg

Product description:
19" FIXED SHELF - FOR USE WITH WPR400 SERIES

Outer dimensions:
(w x h x d)

489 x 47,6 x 275

Unit height:

1 HE