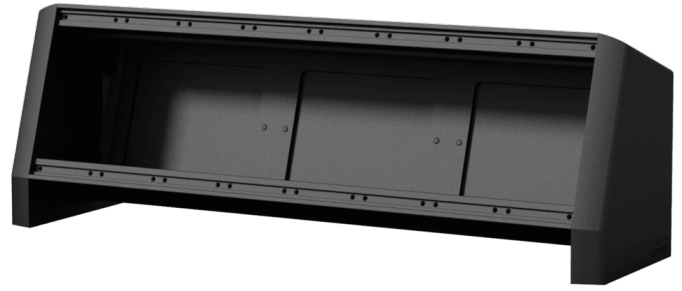


Highlights:

- Flexible structure for system integration & connectivity
- Wide variation of compatible modules available
- 60 mm usable depth
- Pre-threaded mounting profile for easy assembly
- Structured and scratch resistant black powder coating
- 18° angle
- Aluminum extruded construction with rounded ABS sides
- Stores 8 units of CASY modules

The CASY018 is a modular desktop chassis which can be fitted with 8 modules from the CASY range. The flexible and modular structure ensures maximum versatility, allowing the system to be adapted to project specific requirements. Possibilities range from audio, video and data interconnection to power distribution, control panels, power supplies and many more.

The aluminum construction features pre-threaded hole inserts allowing module installation with a maximum of 8 units with a built-in depth upto 60 mm. It can be mounted on any table or desk, offering convenient connections in studio, broadcast or office environments. Cable entry is possible through large access holes on the rear or guiding through the side holes covers. The sides are constructed out of ABS material and modules can be fixed inside the unit using the included M3 screws. The overall construction is finished in a black (RAL9004) structured and scratch resistant powder coating.

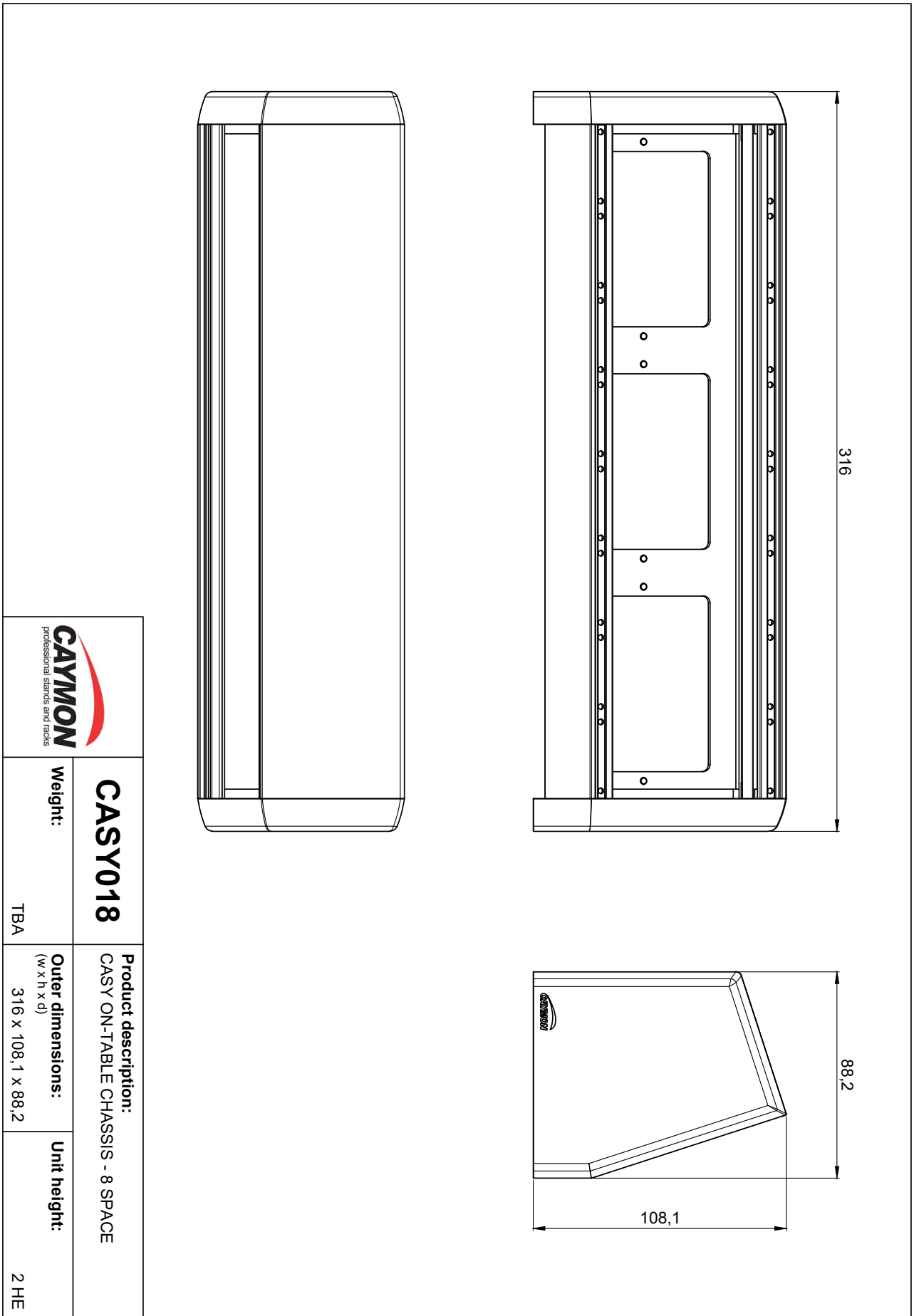



Product Features:

| Module | Units | 8 x front side |
|-------------------|-------|--|
| Dimensions | | 316 x 108.1 x 88.2 mm (W x H x D) |
| Max. usable depth | | 60 mm |
| Weight | | 0.6 kg |
| Construction | | Alu extrusion with plastic side covers |
| Connection | | Large access holes on rear side Cable duct or gland entry on sides |
| Finish | | Structured powder coating |
| Colours | | Black (RAL9004) |

Variants:

- CASY018/B - Black



| | |
|---|--|
|  | |
| CASY018 | Product description: CASY ON-TABLE CHASSIS - 8 SPACE |
| Weight: TBA | Outer dimensions: (w x h x d) 316 x 108,1 x 88,2 |
| | Unit height: 2 HE |