



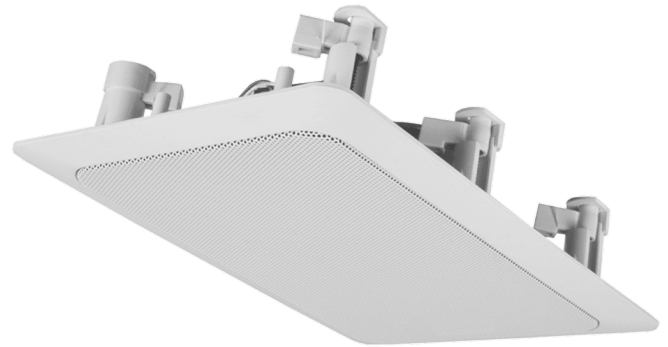
WS624

Quick fit 2-way 5 1/4" rectangular in-wall speaker

The WS series loudspeakers are high-quality in-wall/ceiling loudspeakers, delivering exceptional sound quality and value for a wide variation of applications, ranging from paging and announcements to background music systems in a wide range of business applications, including hotels, restaurants and pubs, corporate offices, retail stores, etc. The WS624 in-wall/ceiling loudspeaker features a 5 1/4" driver with a 1" tweeter, having a continuous power handling of 30 Watt and a maximum power handling of 60 Watt. The 2-way construction makes the WS624 the perfect match for a wide variation highly demanding of applications, guaranteeing a high-quality and true-to-nature reproduction of music and speech. The moisture proof treatment on the speakers' cone and aluminum front grill protects it for installation in humid or outdoor environments. A multi-tapping line transformer fitted with Fast-con™ allows fast and smooth connections to 100 Volt public address or low impedance systems. The mounting of the loudspeaker into the wall or ceiling is achieved with a Quick-fix mechanism, offering a great installers convenience and lifetime stability. The construction of the speakers' housing is made out of high-quality ABS, while the front is covered by a solid powder-coated aluminum grille. Custom painting is possible for a total blending into any environment.

Applications:

- Bars & Restaurants
- Retail
- Hotels
- Corporate



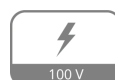
Properties:



Impedance:



Voltage:



System specifications:

Speaker type		2-way
Peak power handling		120 W
Program power handling		60 W
RMS/AES power handling		30 W
Impedance		8 Ω (WS624/W)
		16 Ω (WS624D/W)
Line Transformer Tappings	1	24 W / 417 Ω
	2	12 W / 833 Ω
	3	6 W / 1667 Ω
Sensitivity (1W/1m)		92 dB
Sound Pressure (Max. W/1m)		107 dB
Frequency	Response (\pm 3 dB)	60 Hz - 20 kHz
	Range (-10 dB)	50 Hz - 20 kHz
Crossover	Type	Passive built-in
Dispersion	Horizontal	100°
	Vertical	100°
Connectors		Fast-con™ connections
Drivers	LF	5 1/4" Woofer
	MF	5 1/4" Woofer
	HF	1" Dome tweeter

Product Features:

Dimensions	280 x 192 x 90 mm (W x H x D)
Weight	1.560 kg (WS624/W) 1.310 kg (WS624D/W)
Construction	ABS
Front finish	Aluminium grill
Cut-out measurement	245 x 155 mm
Built-in depth	85 mm
Mounting & handling	QuickFit™ installation system (-screw)
Colours	White (RAL9010)
Accessories	Included Foam inlay Cut-out template

Shipping & Ordering:

Packaging	Cardboard box
Shipping weight & volume	1.700 kg - 0.0088 Cbm (WS624/W) 1.560 kg - 0.0088 Cbm (WS624D/W)

Architects' and Engineers' Specifications:

The in-wall / ceiling mount loudspeaker shall be a 2-way type equipped with a 5 ¼" low frequency driver and a 1" tweeter and fitted with a line transformer allowing it to be used on both low impedance (8 Ohm) and 100 Volt distributed lines. It shall have an RMS power handling of 30 Watt with a maximum power handling of 60 Watt and the frequency response (± 3 dB) shall range from 60 Hz to 20 kHz. The sensitivity shall be 92 dB when measuring with an input signal of 1 Watt at a distance of 1 meter, while the maximum continuous sound pressure level shall be 107 dB. The nominal dispersion shall be a 135° conical coverage pattern at -6dB (average 100 Hz - 10 kHz). The loudspeaker shall be switchable between 8 Ohm and constant voltage operation, and shall be fitted with a multi-tapping line transformer with tapings for 24 Watt, 12 Watt and 6 Watt including an 8 Ohm bypass. Fast and smooth connection of the system shall be possible using a Fast-con™ multi-tapping connector. The speakers frame shall be constructed in high quality ABS material in a white (RAL9010) colour and is fitted with a removable aluminium grill allowing custom painting to make it blend-in with any environment. Mounting of the speaker into the ceiling shall be possible using a 4-screw Quick-fix installation system. The speaker shall have dimensions 280 x 192 mm, a depth of 90 mm and the weight shall not exceed 1.56 kg. The speaker shall fit in a mounting hole with a cutout dimensions of 245 x 155 mm and a build-in depth of 85 mm.